



Design typically does not take camber of precast planks into account when designing the floor topping material.



Typical Thickness vs Spans:

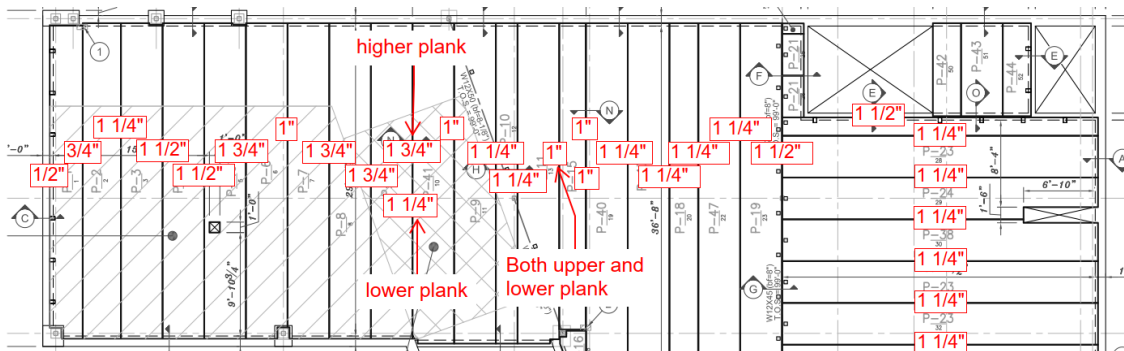
6" plank = ±20'-0" 8" plank = ±26'-8" 10" plank = ±33'-4" 12" plank = ±40'-0"

If camber could be an issue, I suggest making the planks a little deeper to accommodate less camber AND/OR planning on a thicker topping slab to accommodate for camber.

Plank elevations might vary and continue to vary because of temperature, inconsistent temperature in the space above/below, and direct sunlight.

Concrete topping needs a minimum 2" thickness...

We should NOT be installing Redi-Mix concrete topping less than 2", with any size aggregate.



ALWAYS SHOOT YOUR FLOOR TO DETERMINE TOPPING SLAB THICKNESS

If we do end up with a slab less than 2", a bag mix will likely be required.
Contact the Quality Department for an appropriate bag mix to use on your project.

If the designer specifies a lightweight concrete topping, please discuss the likely concern with a topping slab and what might not be achievable in a bag mix if needed.

Please Discuss in Preconstruction...Prior to Bidding!

